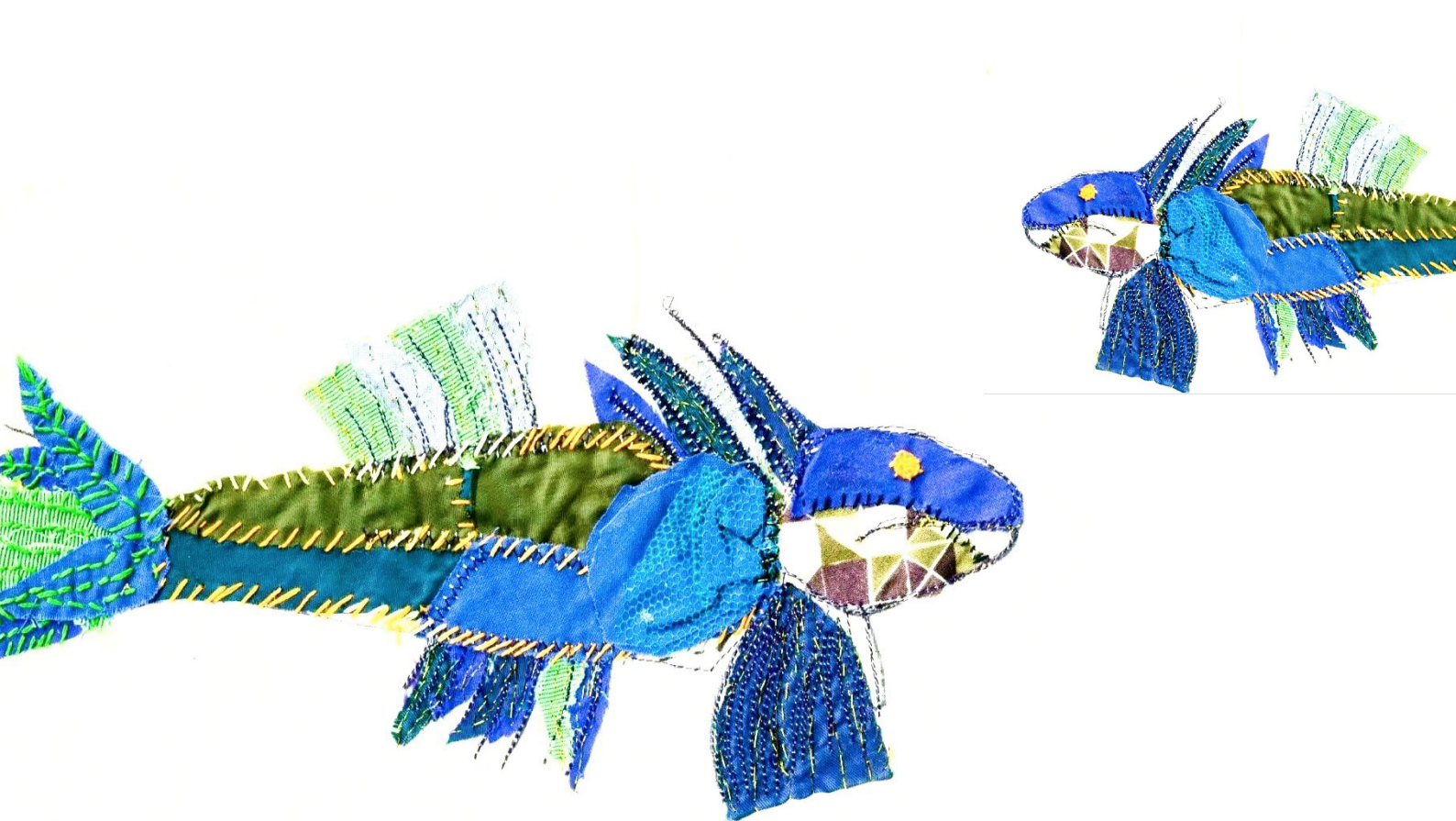


Trustees' Report and financial statements for the year ended March 31, 2025 for Equal Arts Ltd.



Vision: A healthy and creative society which values older people.

Mission: To build healthier communities by improving the lives of older people through



Contents

Trustees' Report	1 - 17
Independent Examiner's Review	18
Statement of financial activities	19
Balance Sheet	20
Cash Flow Statement	21
Notes to the financial statements	22 - 34



The trustees, who are also directors for the purpose of company law, have pleasure in presenting their report and the financial statements of the charitable company for the year ended March 31, 2025.

The financial statements comply with the Charities Act 2011, the Companies Act 2006, the memorandum and Articles of Association and Accounting and reporting by Charities: Statement of Recommended Practice applicable to charities preparing their accounts in accordance with the Financial Reporting Standard applicable to the UK and republic of Ireland (FRS 102).

At Equal Arts we work to:

- Provide older people with creative opportunities to improve wellbeing and help reduce loneliness
- Champion creative ageing and its benefits to improve the quality of care provided to older people
- Create lasting change, developing community, age-friendly relationships and encouraging social inclusion
- 1 • Challenge negative attitudes towards ageing and dementia.

Hello from our chair Lyn Chapman

I'm delighted to reflect on what's been a prosperous year for Equal Arts in my first year as Chair.

At the heart of the charity is the mission to build healthier communities by improving the lives of older people through creativity. The year's projects, artwork and feedback are a true reflection of the impact of our work.

Supporting people in care to find new friendships, being a highlight in the week for someone or increasing people's confidence in their abilities – all may seem small against the national landscape of creative ageing, but I know these micro differences are the driving force for the Equal Arts team.

In the south, Parkfield Nursing home's longstanding friendship with Glebe Primary School saw them create and design their own story book with creative writers. At The Willows it's been all about the history of London markets and their legacy.

Closer to home we've supported groups in Newcastle and Gateshead to be thriving, sociable and creative places for people 55+ to meet each week with artists. We're particularly proud of the well-established friendships and aspirational artwork being created.

An exciting area of growth for the charity has been the collaboration with Newcastle Libraries for the Reading with Dementia programme. It's allowed us to build on our dementia-friendly publishing work, establishing new groups to explore ways people can continue reading for enjoyment. We're only part way through but the responses from library services nationally tell us we're responding to a need that's not sufficiently being met.

With funding from UKSPF we've been able to take our creative programme into new areas, forming partnerships within North Tyneside for the first time for a public exhibition and original song by residents living in a dementia care home.

Wrapping up the year was the arrival of Nic Kendall, our new training manager – Nic has driven our training programme for Gateshead care staff and artists exploring the intersectionality of older people.

Reflecting on the year, it's evident that progress and impact comes from a joined up understanding and willingness to embrace creative ageing and the opportunities it can bring to people. We're looking forward to the next 12 months as the forerunner in the field of creative ageing in the UK.

Creativity for Wellbeing

This year we saw the groups we support in cultural and care settings thrive. Creative workshops led by professional artists were the catalyst for building relationships, confidence and roles within their community. We supported participants to share their ideas and voices leading to some fantastically original projects. Intergenerational workshops in Gateshead and Hillingdon led to the creation of a new story book and puppet show. Elsewhere we had sculpture, volunteering and bringing the Care Home Choir to people in the newly opened Promoting Independence Centre in Gateshead.

The quality of participants' work and continued engagement in creativity is testament to the diverse and experienced skillset of the freelance artists we work with. Our core mission to improve older people's lives through creativity was wholly supported with funding from Point North, North East Community Foundation, Barbour Foundation, Dulverton, Sport England and Garfield Western.

Together with training for care, NHS and cultural sector staff, access to creativity and its benefits continued to make a difference to the lives of thousands of people.



“We’re at the workshops each week, they’ve been fantastic for mam. She’s socialising with some lovely ladies and looking forward to going, and the artist leading the class is brilliant! I can't thank you enough....it's made a real difference to my mam.”

Participant's family member



Highlights

Creative Exchange results in new book!

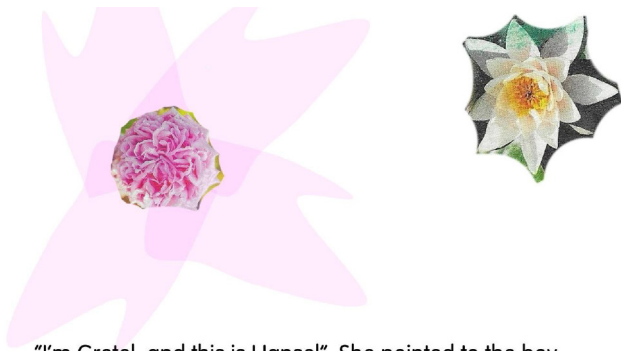
This year friendships between residents at Parkfield House and Hillingdon Respite Home in Hillingdon and Glebe Primary School has gone from strength to strength.

Thanks to funding from the Heathrow Community Fund, the group met with creative writers and illustrators each week for their Creative Exchange project.

Little Alice - Head in the Clouds is their take on classic fairy tales and childhood stories.

Parkfield resident Maureen said: "I think it's lovely, I really do. It's brought tears to my eyes, I didn't expect anything like this... I think we could get this published, create a series! I've even started making up stories in my head at night when I'm in bed - I used to make up stories for my children all the time.

"It's been a project that involved everybody. All of us could say as much or as little as we liked. It was teamwork!"



"I'm Gretel, and this is Hansel". She pointed to the boy sitting at the table, who gave a tentative wave.

Alice looked around to see a large bookcase, a vase of fresh flowers on the table; daffodils, tulips, chrysanthemums, and realised the delicious smell was the fresh gingerbread men plated on the table.



GARDEN POTS TO PUPPETS!

Over at Angel Court sheltered housing scheme in Gateshead, tenants teamed up with Harlow Green Primary School for a performance wrapping up their year-long project. From story-telling and songs to textiles and puppet-making, the groups' enthusiasm was captured during a performance of their work at the school.

Participant Alan said: "I've had a great time. Me and Josh have got on like a house on fire. We've not stopped talking. I really enjoyed the sewing, haven't done that since I was in the army so I was surprised at how quickly it came back."

Largescale eco-artwork!

TENANTS living at Belford Court in Blyth unveiled their latest project in February 2025 - a 240kg mosaic inspired by their seaside home.

For three months they were supported by artist Neil Canavan as they designed and placed thousands of shells, pebbles and slate into the largescale artwork, now taking pride of place in the garden. The project was made possible with funding from a Blyth Town Council Community Grant.

Participant Suzan said: "It's some weight I can tell you! We took it right from the first design on paper all the way through to installing it. This is the first time we've ever done anything on this scale, it's been fantastic to be a part



Dementia-friendly reading

This past year has seen a real growth for the organisation and it's work around dementia-friendly reading. Multiple, complimentary programme strands have helped establish Equal Arts as the fore runner in dementia-friendly reading. With each evaluation and project we are able to better understand the gap in provision and how best to support people living with dementia to continue reading for enjoyment.



The last phase of **Helping Bewick's Brilliance Shine** led to an in-depth evaluation of the project. The final report demonstrated enrichment value for participants engaging with collections for a long period, The findings helped scope the potential for future collaborative work with Newcastle Libraries and the wider library sector.

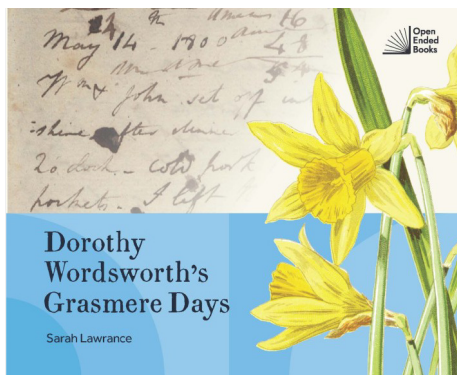


Newcastle Libraries were successful in an Arts Council England application, contracting Equal Arts to develop and test new approaches for **Reading with Dementia**. This 18-month innovative and sector leading project will see us develop reading groups within the city and branch libraries, creating dementia-friendly resources and staging a national Reading with dementia symposium in May 2026.



Having launched **Bewick Tales** we dedicated time this year to promoting the title to raise awareness. We featured in radio 4 programmes, received mentoring to support with book distribution and sales, carried out website SEO, showcased at the national Creative Industries summit and were part of the Books on Tyne festival in November.

Introducing Dorothy Wordsworth's Grasmere Days



This year focused on the research and development for the next title in our dementia-friendly series. Dorothy Wordsworth's Grasmere Days began with research on site at Wordsworth Trust in Grasmere in May 2024. This built on the existing relationship established during the Bewick project when we took a group of participants to visit the Trust and subsequently curated a watercolours display for their community gallery (2023-24).

The book was designed with Wendy Lewis with invaluable support from Wordsworth Trust who supplied images free of charge and acted as consultants during development of narrative and text. The richness of the Wordsworth Trust collection combined with Dorothy's wonderfully evocative journal writing made this a fine



“I’ve shared this book many times with a friend who has dementia. We’ve both enjoyed reading the stories and found something interesting to talk about each time. This is book is thoughtful and engaging.”

“A must-have tool for people caring for those with dementia.”



Training

GATESHEAD DEMENTIA CONTRACT

We were delighted to have the opportunity to strengthen our work for a successive year, supporting Gateshead care staff with skill development and vital peer support. This year's training package focused on best meeting the needs and skill gaps of those engaging with the programme while recruiting new attendees from additional venues.

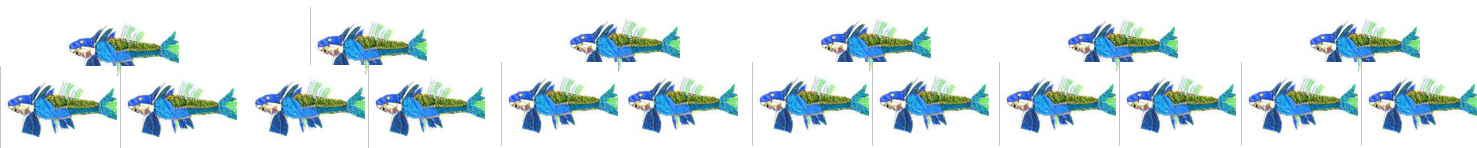
The introduction of our new training manager Nic Kendal in January 2024 further bolstered this ongoing programme. Topics covered in the training have varied from compassion fatigue and namaste care to supporting people with dementias with their eating and improvised storytelling.

Student Placements

We partnered with Northumbria University, providing placements for nursing students within creative groups based in cultural settings. Feedback was hugely positive and led to students reviewing how they could introduce creative sessions into the hospital wards they are based in. We'll be partnering again with Northumbria University providing students placements in 2025/26.

Online and in person training

We've delivered online and face-to-face Dementia & Imagination half day sessions across the year to cultural staff, dementia care staff and with artists new to the field of creative ageing. In addition this year we've leading courses in Namaste Care at the request of housing and care home providers.



“I found it really valuable with interactive elements, practical discussions and wider thinking around ideas. It linked to my practice but also made me think more about collaborative practice.” *Training participant*

“This training gave me a much better insight how to support someone with Dementia, as I wish I had this knowledge previously when a loved family member had Vascular dementia. I found this very interesting and it was delivered excellently.” *Training participant*



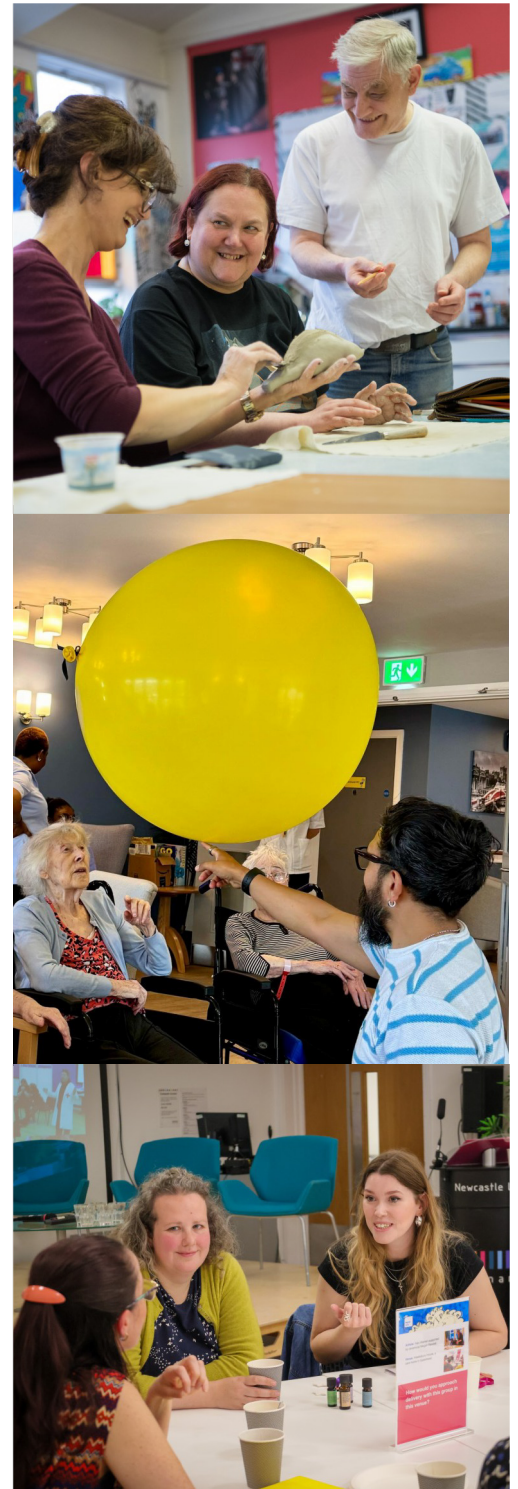
Drawn Together

Drawn Together is our ambitious training and mentoring initiative addressing the needs of diverse audiences and underserved people 55+ living in the North East.

Highlight so far for the project funded by Arts Council England, has been the partnership working and skill sharing with North East organisations Chilli Studios, Lawnmowers theatre Company, Gem Arts and Curious Arts, together we're training a cohort of 20+ artists in the intersectionality of older people here in the region and how best to support their needs.

What's next?

- Shadowing and commissioning opportunities to upskill artists in new fields to enhance and widen their practice and confidence
- Establishing an inclusive creative ageing peer network for North East artists
- Connect artists with cultural and care setting partners to boost employment roles
- Increase inclusivity and access to creativity for diverse, underserved audiences 55+



Future Plans 25/26

Open Ended Books and Reading with Dementia

Our next book Dorothy Wordsworth's Grasmere Days being will be published in May 2025 during Dementia Action Week. A number of new partnerships are progressing nationally with the aim of scheduling a further two to three publications. All of this work is helping us consolidate Principles of Reading with Dementia which we anticipate sharing with library services nationally.

Training

We're looking forward to developing our offer building on the successes of Drawn Together and our Dementia Champions programme, supporting the creative and meaningful activities in care homes across Gateshead. Feedback from those involved has given us food for thought in relation to establishing a North East Creative Ageing Artist Network. And similarly the development of the care staff and activity coordinators involved in the Dementia Champions programme is prompting us to consider creating an exhibition showcasing their achievements.

User-led voice and Sustainable Programming

THE OLDER PEOPLE'S USER-LED GROUPS WE WORK IN PARTNERSHIP WITH HAVE AMBITIOUS PROJECTS PLANNED RESPONDING TO COLLECTIONS IN ART GALLERIES AND MUSEUMS, DEVELOPING A CREATIVE RESPONSE TO THE CLIMATE EMERGENCY, EXPLORING THE DECOLONISATION OF CULTURAL COLLECTIONS, USING DIGITAL STORYTELLING TO RAISE

awareness of hidden disabilities. Many of these groups are in the North East but user-led groups further afield are developing a creative response to the poetry and written works of under-represented LGBTQ+ poets in national collections as well as taking a localised view of the changes in the role of the market for communities in East London.

Partnerships

Working in partnership is increasingly important and the successes of partnering with other participatory practice focussed organisations including Chilli Studios, The Lawnmowers. Curious Arts and Gem Arts as well as larger cultural organisations such as The Wordsworth Trust and Newcastle Libraries is informing the prospect of a number of exciting partnerships in 25 -26 with culture, health and housing partnerships!

We fully expect to see a growth in Intergenerational partnerships building on long-standing successes such as Angel Court and Harlow Green Primary School, who will be celebrating 10 Years of working together in 2025, as well as the incredible relationship that continues to grow between Parkfield Care Home and Glebe School in outer west London. In 2025 – 26 we'd like to explore other forms of intergenerational projects with differing age groups involved in a Relationship Centred Care approach to meeting the needs of vulnerable older people.

Financial review

Income of £453,722 (23-24 £327,732) has been generated during the year. £272,820 (23-24 £209, 085) relates to restricted funds.

An operating surplus of £28,759 (23-24 loss £69,243) is shown on the Statement of Financial Activities.

Within the overall result was an increase in funds to £404,703 (23-24 £375, 944).

Reserves Policy

The trustees monitor the progress of the organisation when they meet at their Management Committee Meetings five times a year. The Charity's funding schedule is reviewed and forecast funding compared to actual. This allows the trustees to keep track of projected funding each quarter and to foresee any shortfalls. The trustees are aware of the risk that obtaining core funding, although usually successful, may not be achieved at the beginning of each financial year.

To safeguard against this, the trustees aim to have six months' worth of running costs built up in a Redundancy and Wind-Up reserve (within Designated Funds) to sustain stability. This reserve has been increased in 24/25 to reflect increased running costs and staff costs. The trustees decided in 2022 to designate part of Unrestricted Reserves to a Development Fund. £32500 of this has been utilised in 24/25, leaving £32500 at year end for Open Ended Books.



Risk Register

Area	Risk	Potential impact	MITIGATING STEPS	Impact	Likelihood	After action
External Factors: Cost of Living Crisis and economic impact of global and political circumstances	Continued upwards pressure on costs Changing funding priorities	Increased costs amidst reduced available funding poses significant challenge	Deliver creative services which address cost of living crisis Rationalise expenditure where possible	High	High	Med
Strategic Plan	Implementing 5 Year Plan could restrict response to circumstances and opportunities	Unable to deliver business plan priorities	Business Plan requires review and support to implement timely and robust changes	Low	Low	Low
Policies & Procedures	All policies and procedures updated	Clear Policies & Procedures with staff Handbook	Annual Reviews	Med	Low	Low
Finance	Grant dependence and reduced earned income	Continued focus on Fundraising alongside diversifying & increasing %	Regular financial reviews with contingency positions	High	Med	Med
Low level continuance of Covid 19	Continued disruption to service delivery due to care staff retention issues in care homes	Covid, sick-leave and staff retention amongst care staff resulting in cancellations and irregular delivery	Offer a responsive service when required Increase services less affected	Low	Med	Low

A huge **THANK YOU** to our freelancers, staff team and trustees this past year for their efforts, enthusiasm and commitment. Together we've continued providing innovative and exciting ways for people to connect through creativity!

Trustees

John Beeley

Harriet Bendelow

Lyn Chapman (Chair,
elected 24.09.24)

Karen Franks

Andrew Newman

Anne Walton

Staff team

Douglas Hunter

Nicola Kendall

Sarah Lawrance

Kate Parkin

Kerry Wood



Reference and Administrative Details

Registered Charity Number

517352

Company Number (England and Wales)

01992359

Registered Office - Level 6, Newcastle City Library, 33 New Bridge Street West, NE1 8AX



Our advisors

Examiners: Greenfingers Accounting

Bankers: Barclay Bank Plc, 49/51 Northumberland St, Newcastle upon Tyne NE1 7AF

Legal advisors: Patterson Wolf & Co



Supported using public funding by
**ARTS COUNCIL
ENGLAND**



Made possible with
**Heritage
Fund**



THE DULVERTON TRUST



**Community
Foundation**

**THE
SHIPLEY
ART GALLERY**



**COMMUNITY
FUND**



**Garfield Weston
FOUNDATION**



**Newcastle
University**

The Joicey Trust



**SPORT
ENGLAND**

THE

Barbour

FOUNDATION



**Gateshead
Council**



Creative UK



**Newcastle Gateshead
Clinical Commissioning Group**



Funded by
UK Government



Structure, Governance and Management

Governing document

Equal Arts Ltd is a company limited by guarantee and a registered charity currently with a Board of Trustees. Under the memorandum and articles of association with which the organisation is governed, the charity has the power to make any investment that the trustees see fit.

Appointment of trustees

New trustees are appointed by serving trustees. The trustees meet at least five times each year and the CEO with the Operations Manager handle the day-to-day finances of the charity. The trustees who served during the year are set out on page 15. A third of the longest standing committee members need to stand down at the Annual General Meeting but can be re-elected by the existing trustees. All Company Members and Management Committee Members are circulated with papers prior to the AGM advising them of the retiring trustees. Trustees are encouraged to attend appropriate external training courses whenever they are arranged.

Induction and training of trustees

The trustees are encouraged to attend external training and are notified of relevant training by the charity.

Organisational structure

The organisation has a board of trustees comprising 6 members. A Chief Executive manages the day-to-day operations of the charity and line manages staff – Programme Managers, Operations and Communications Manager, Training Development Manager and freelance staff.

Pay policy for senior staff

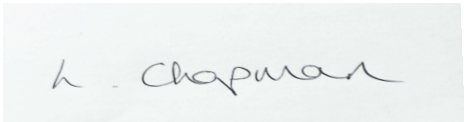
The pay of senior staff is reviewed by the board annually.

Relationships with related parties

None of the trustees receive remuneration or other benefit from their work with the charity.

This report has been prepared in accordance with the special provisions of the Companies Act 2006 relating to small companies.

Approved by order of the board of trustees on Oct 21, 2025 and signed on its behalf by



Mrs Lyn Chapman (Chair)

Independent Examiners Report to the Trustees of Equal Arts Ltd for the year ended 31 March 2025

I report on the accounts of the company for the year ended 31 March 2025 which are set out on pages 17 to 34.

Respective responsibilities of trustees and examiner

The charity's trustees (who are also the directors of the company for the purposes of company law) are responsible for the preparation of the accounts in accordance with the requirements of the Companies Act 2006 ('the 2006 Act').

Having satisfied myself that the accounts of the company are not required to be audited under Part 16 of the 2006 Act and are eligible for independent examination, I report in respect of my examination of your company's accounts as carried out under section 145 of the Charities Act 2011 ('the 2011 Act'). In carrying out my examination I have followed the directions given by the Charity Commission under section 145(5)(b) of the 2011 Act.

Basis of independent examiner's statement

Since the company's gross income exceeded £250,000 your examiner must be a member of a body listed in section 145 of the 2011 Act. I confirm that I am qualified to undertake the examination because I am a member of the ICAEW, which is one of the listed bodies.

An examination includes a review of the accounting records kept by the charity and a comparison of the accounts presented with those records. It also includes consideration of any unusual items or disclosures in the accounts and seeks explanations from the trustees concerning any such matters. The procedures undertaken do not provide all the evidence that would be required in an audit, and consequently I do not express an audit opinion on the view given by the accounts.

Independent examiner's statement

I have completed my examination. In the course of my examination, no matter has come to my attention in connection with the examination giving me cause to believe that in any material respect:

- accounting records were not kept in respect of the company as required by section 386 of the 2006 Act; or
- The accounts do not accord with those records; or
- The accounts do not comply with the accounting requirements of section 396 of the 2006 Act other than any requirement that the accounts give a 'true and fair view' which is not a matter considered as part of an independent examination; or
- The accounts have not been prepared in accordance with the methods and principles of the Statement of Recommended Practice for accounting and reporting by charities applicable to charities preparing their accounts in accordance with the Financial Reporting Standard applicable in the UK and Republic of Ireland (FRS 102).

I have no concerns and have come across no other matters in connection with the examination to which attention should be drawn in this report in order to enable a proper understanding of the accounts to be reached.



.....

Irena Peel FCA
Greenfingers Accounting Ltd
86-90 Paul Street
London
EC2A 4NE

29 November 25

Date

Statement of Financial Activities for the Year Ended 31 March 2025

	Notes	Unrestricted Funds £	Designated Funds £	Restricted Funds £	Total 2025 £	Total 2024 Restated £
Income from:						
Donations and legacies	4	31,408	0	272,820	304,228	220,030
Charitable Activities	5	147,692	0	0	147,692	103,867
Investment Income	6	1,802	0	0	1,802	3,835
		180,902	0	272,820	453,722	327,732
Expenditure on:						
Charitable activities	7	126,818	45,000	253,145	424,963	396,975
		126,818	45,000	253,145	424,963	396,975
Net income/(expenditure)		54,084	(45,000)	19,675	28,759	(69,243)
Transfers between funds	15	(4,000)	4,000	0	0	0
Net movement in funds		50,084	(41,000)	19,675	28,759	(69,243)
Reconciliation of funds						
Total funds brought forward		26,939	303,500	45,505	375,944	445,187
Total funds carried forward		77,023	262,500	65,180	404,703	375,944

All income and expenditure has arisen from continuing activities

Balance Sheet as at 31 March 2025

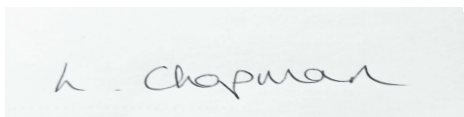
		2025	2025	2024	2024
	Notes	£	£	£restated	£restated
Fixed Assets					
Tangible Assets	12		0		246
Current Assets					
Debtors	13	13,572		24,720	
Cash at Bank and In Hand		411,880		373,003	
		<u>425,452</u>		<u>397,723</u>	
Creditors: amounts falling due within one year	14	(20,749)		(22,025)	
Net Current Assets			<u>404,703</u>		<u>375,698</u>
Total Assets less Current Liabilities			<u>404,703</u>		<u>375,944</u>
Funds					
Unrestricted Funds			77,023		26,939
Designated Funds			262,500		303,500
Restricted Funds			65,180		45,505
	15		<u>404,703</u>		<u>375,944</u>

For the year ending 31 March 2025 the company was entitled to exemption from audit under section 477 of the Companies Act 2006 relating to small companies.

Directors responsibilities:

- The members have not required the company to obtain an audit of its accounts for the year in question in accordance with section 476;
- The directors acknowledge their responsibilities for complying with the requirements of the Act with respect to accounting records and the preparation of accounts

The financial statements were approved by the trustees on October 21 2025 and signed on their behalf by:



Ms L Chapman – Chair and Trustee
Company Registration Number 01992359

The notes below form part of these financial statements

Cash Flow Statement for the year ended 31 March 2025

		2025	2024
	notes	£	£restated
Cash flows from operating activities			
Cash generated from operations	18	37,075	(56,189)
Net cash provided by (used in) operating activities		37,075	(56,189)
Cash flows from investing activities			
Interest received		1,802	3,835
Payment to acquire tangible assets		0	0
Net cash provided by (used in) investing activities		1,802	3,835
Change in cash and cash equivalents in the reporting period		38,877	(52,354)
Cash and cash equivalents at the beginning of the reporting period		373,003	425,357
Cash and cash equivalents at the end of the reporting period		411,880	373,003

Notes to the Financial Statements for the year ended 31 March 2025**1. Accounting Policies****1.1 Basis of preparing the financial statements**

The financial statements have been prepared in accordance with Accounting and Reporting by Charities: Statement of Recommended Practice applicable to charities preparing their accounts in accordance with the Financial Reporting Standard applicable in the UK and Republic of Ireland (FRS 102) issued in October 2019, the Financial Reporting Standard applicable in the United Kingdom and Republic of Ireland (FRS 102), the Charities Act 2011, the Companies Act 2006 and UK Generally Accepted Accounting Practice.

The charity constitutes a public benefit entity as defined by FRS 102. The financial statements are prepared under the historical cost convention or transaction value unless otherwise stated in the relevant accounting policy note (s). The financial statements are prepared in sterling, which is the functional currency of the charity and rounded to the nearest £.

The significant accounting policies applied in the preparation of these financial statements are set out below. These policies have been consistently applied to all years presented unless otherwise stated.

1.2 Going Concern

The financial statements have been prepared in a going concern basis as the trustees believe that no material uncertainties exist. The trustees have considered the level of funds held and the level of income and expenditure for 12 months from authorising these financial statements. The budgeted income and expenditure is sufficient with the level of reserves for the charity to be able to continue as a going concern.

1.3 Fund accounting

Unrestricted funds are available for use at the discretion of the trustees in furtherance of the general objectives of the charity and which have not been designated for other purposes.

Designated funds comprise unrestricted funds that have been set aside by the trustees for particular purposes. The aim and use of each designated fund is set out in the notes to the financial statements.

Restricted funds are funds which are to be used in accordance with the specific restrictions imposed by donors or which have been raised by the charity for particular purposes. The cost of raising and administering such funds are charged against the specific fund. The aim and use of each restricted fund is set out in the notes to the financial statements.

1.4 Income

All income is recognised in the Statement of Financial Activities (SoFA) when the charity has entitlement to the funds, any performance conditions have been met, the amount can be measured reliably, and it is probable that the income will be received.

Income from charitable activities includes income received under contract or where entitlement to grant funding is subject to specific performance conditions and is recognised as earned. Grant income included in this category provides funding to support performance activities and is recognised where there is entitlement, certainty of receipt and the amount can be measured with reasonable certainty. Income received to deliver services over a specific period covering more than one financial year is accounted for over the specific period; related expenditure is accounted when incurred.

Investment income relates to interest earned through holding assets on deposit.

Notes to the Financial Statements (continued) for the year ended 31 March 2025**1.5 Expenditure**

Liabilities are recognised as expenditure as soon as there is a legal or constructive obligation committing the charity to that expenditure, it is possible that a transfer of economic benefits will be required in settlement and the amount of the obligation can be measured reliably. Expenditure is accounted for on an accruals basis and has been classified under headings that aggregate all costs related to the category. Where costs cannot be directly attributed to particular headings, they have been allocated to activities on a basis consistent with the use of resources.

1.6 Tangible fixed assets

Depreciation is provided at the following annual rates in order to write off each asset over its estimated useful life.

Fixtures and fittings	–	Straight line over 6 years
-----------------------	---	----------------------------

Computer equipment	–	Straight line over 3 years
--------------------	---	----------------------------

1.7 Debtors

Debtors (including trade debtors and loans receivable) are measured in initial recognition at settlement amount after any trade discounts or amount advanced by the charity. Subsequently, they are measured at the cash or other consideration expected to be received.

1.8 Cash at bank and in hand

Cash at bank and in hand includes cash and short term highly liquid investments with instant access from the date of opening of the deposit or similar account.

1.9 Creditors and provisions

Creditors and provisions are recognised where the charity has a present obligation resulting from a past event that will probably result in the transfer of funds to a third party and the amount due to settle the obligation can be measured or estimated reliably. Creditors and provisions are normally recognised at their settlement after allowing for any trade discounts due.

1.10 Financial instruments

The charity only has financial assets and financial liabilities of a kind that qualify as basic financial instruments. Basic financial instruments are initially recognised at transaction value and subsequently measured at their settlement value with the exception of bank loans which are subsequently measured at amortised cost using the effective interest method.

1.11 Taxation

The charity is exempt from corporation tax on its charitable activities.

2. Legal status

Equal Arts is a Company Limited by Guarantee in the United Kingdom. In the event of the charity being wound up, the liability in respect of the guarantee is limited to £1 per member of the charitable company. The address of the registered office is given in the charity information in the reference and administration pages of these financial statements.

Notes to the Financial Statements (continued) for year ended 31 March 2025.**3. Comparatives for the Statement of Financial Activities****3.1 Prior Year adjustment**

Following the completion of a project to review historic unreconciled transactions it was identified that cumulative revenue was overstated in prior years. The trustees have therefore made a prior year adjustment to correct the error.

The restated and original statement of financial activities are shown in this note 3. The original and restated analysis of funds are shown in note 15. The amount of correction per each line item is as follows:-

	£ restated	£ original	£ difference
2024 statement of financial activities			
Charitable activity income	103,867	117,115	(13,248)
01/04/23			
Reserves brought forward	445,187	483,178	(37,991)
01/04/24			
Reserves brought forward	375,944	427,183	(51,239)

Restated Statement of Financial Activities year ended 31 March 2024

	Notes	Unrestricted funds £	Designated funds £	Restricted funds £	Total 2024 £	Total 2023 £
Income from:						
Donations and legacies	4	10,945	0	209,085	220,030	194,120
Charitable activities	5	103,867	0	0	103,867	171,307
Investment income	6	3,835	0	0	3,835	6
		118,647	0	209,085	327,732	365,433
Expenditure on:						
Charitable activities	7	182,435	0	214,540	396,975	325,823
		182,435	0	214,540	396,975	325,823
Net income/(expenditure)		(63,788)	0	(5,455)	(69,243)	39,610
Transfers between funds	15	48,000	(48,000)	0	0	0
Net movement in funds		(15,788)	(48,000)	(5,455)	(69,243)	39,610
Reconciliation of funds						
Total funds brought forward		42,727	351,500	50,960	445,187	405,577
Total funds carried forward		26,939	303,500	45,505	375,944	445,187

Notes to the Financial Statements (continued) for year ended 31 March 2025.**Original Statement of Financial Activities year ended 31 March 2024**

	Notes	Unrestricted funds £	Designated funds £	Restricted funds £	Total 2024 £	Total 2023 £
Income from:						
Donations and legacies	4	10,945	0	209,085	220,030	194,120
Charitable activities	5	117,115	0	0	117,115	171,307
Investment income	6	3,835	0	0	3,835	6
		131,895	0	209,085	340,980	365,433
Expenditure on:						
Charitable activities	7	182,435	0	214,540	396,975	325,823
		182,435	0	214,540	396,975	325,823
Net income/(expenditure)		(50,540)	0	(5,455)	(55,995)	39,610
Transfers between funds	15	48,000	(48,000)	0	0	0
Net movement in funds		(2,540)	(48,000)	(5,455)	(55,995)	39,610
Reconciliation of funds						
Total funds brought forward		80,718	351,500	50,960	483,178	443,568
Total funds carried forward		78,178	303,500	45,505	427,183	483,178

Notes to the Financial Statements (continued) for the year ended 31 March 2025**4. Donations and legacies**

	2025	2024
	£	£
Grants receivable	289,320	210,880
Donations	14,908	9,150
	304,228	220,030

Grants receivable analysis:

	2025	2024
	£	£
Community Foundation Tyne and Wear & Northumberland	46,195	52,000
National Heritage Lottery Fund	6,300	56,700
Sport England	14,600	0
County Durham Community Foundation	33,165	0
Arts Council England Lottery	72,000	0
Dulverton Charitable Trust	40,000	0
Barbour Foundation	8,000	0
North Tyneside Council (UKSPF)	18,880	0
Blyth Town Council	4,680	4,080
Sir James Knott Charitable Trust	0	7,800
Garfield Weston	30,000	0
Creative England	6,000	0
McCarthy Stone Foundation	0	4,000
Newcastle City Council	0	5,000
Point North	0	36,835
Innovate UK	0	24,965
Shears Foundation	0	5,500
Other	9,500	14,000
	289,320	210,880

5. Income from charitable activities

	2025	2024
	£	£restated
Earned income	147,692	103,867

6. Investment income

	2025	2024
	£	£
Bank interest receivable	1,802	3,835

Notes to the Financial Statements (continued) for the year ended 31 March 2025**7. Charitable activities costs**

	Total 2025	Total 2024
	£	£
Wages and salaries	224,184	178,491
Staff travel and training	1,902	4,608
Direct project costs	132,986	88,161
Office costs	30,669	58,027
Comms	2,139	795
Professional fees	1,000	12,049
Other costs	23,774	48,954
Bad debt expense	8,063	5,627
Depreciation	246	263
	424,963	396,975

8. Support costs

	2025	2024
	£	£
Wages and salaries	21,659	19,699
Governance costs (note 9)	1,000	2,000
	22,659	20,071

9. Governance costs

	2025	2024
	£	£
Independent examiner's fee	1,000	2,000

10. Net incoming/(expenditure)

Net income/(expenditure) is stated after charging/ (crediting)

	2025	2024
	£	£
Independent examiners fee	1,000	2,000
Depreciation – owned assets	246	263

Notes to the Financial Statements (continued) for the year ended 31 March 2025**11. Staff costs**

	2025	2024
	£	£
Wages and salaries	182,712	150,510
Social security costs	9,154	10,855
Pension costs	32,318	17,126
	<hr/> 224,184	<hr/> 129,633

The average monthly number of employees during the year was as follows:

2025	2024
5	4

No employees received emoluments in excess of £60,000.

The charity trustees were neither paid nor received any other benefits from employment in the year (2024 - £nil) neither were they reimbursed expenses during the year (2024 - £nil). No charity trustee received payment for professional services or other services supplied to the charity (2024 – nil).

The key management personnel of the charity comprise the trustees and one Director. The total amount of employee emoluments received by key management personnel of the charity is £ 69,835(2024 £65,125).

Notes to the Financial Statements (continued) for the year ended 31 March 2025**12. Tangible Fixed Assets**

	Fixtures & Fittings	Computer Equipment	Total
	£	£	£
Cost			
At 1 April 2024	2,935	3,824	6,759
Additions	0	0	0
Disposals	0	0	0
At 31 March 2025	2,935	3,824	6,759
Depreciation			
At 1 April 2024	2,689	3,824	6,513
Charge for the year	246	1	246
Disposals	0	0	0
At 31 March 2025	2,935	3,824	6,759
Net book value			
At 31 March 2024	246	0	246
At 31 March 2025	0	0	0

13. Debtors

	2025	2024
	£	£
Trade debtors	13,103	8,073
Other debtors	468	4,687
Accrued income	0	11,960
	13,572	24,720

14. Creditors: amounts falling due within one year

	2025	2024
	£	£
Social security and other taxes	4,850	8,427
Accruals	1,000	6,030
Other creditors	14,899	7,568
	20,749	22,025

Notes to the financial statements (continued) for the year ended 31 March 2025**15. Analysis of funds****Year ended 31 March 2025**

	At 1 April 2024 £restated	Income £	Expenditure £	Transfers £	At 31 March 2025 £
Unrestricted funds					
General fund	26,939	180,902	(126,818)	(4,000)	77,023
Designated funds					
Redundancy & Wind-up reserve	226,000	0	0	4,000	230,000
Development Fund	65,000	0	(32,500)	0	32,500
Creative Ageing Programme	12,500	0	(12,500)	0	0
	303,500	0	(45,000)	4,000	262,500
Total unrestricted funds	330,439	180,902	(171,818)	0	339,523
Restricted funds					
The Dulverton Charitable Trust	0	40,000	(20,000)	0	20,000
Arts Council England Lottery	0	72,000	(44,000)	0	28,000
National Heritage Lottery Fund	35,000	6,300	(41,300)	0	0
Community Foundation Tyne & Wear and Northumberland	0	46,195	(46,195)	0	0
Move and Groove	0	9,500	(9,500)	0	0
County Durham Community Foundation	0	33,165	(33,165)	0	0
North Tyneside UKSPF	0	18,880	(18,880)	0	0
Sport England	0	14,600	(4,600)	0	10,000
Creative Ageing	5,000	13,500	(15,000)	0	3,500
Sir James Knott Charitable Trust	2,300	0	(2,300)	0	0
Other grants receivable	3,205	18,680	(18,205)	0	3,680
Total restricted funds	45,505	272,820	(253,145)	0	65,180
Total funds	375,944	453,722	(424,963)	0	404,703

Notes to the Financial Statements (continued) for the year ended 31 March 2025**Designated funds**

Redundancy and Wind-up reserve – the fund has been set up to cover contractual redundancy costs and estimated 6 months operational costs the charity would have to meet should it be required to wind up. This calculation is reviewed annually.

Development fund – fund relates to project developments in relation to creating a dementia-friendly publishing imprint.

Creative Ageing Programme – to support creative well-being programmes in supported housing schemes, care settings and cultural venues.

Restricted funds

The Dulverton Charitable Trust -this relates to delivery of creative ageing programmes.

Tyne and Wear and Northumberland Community Foundation – this relates to the delivery of creative ageing programmes in Newcastle and across Tyne and Wear.

Creative Ageing – also supported by McCarthy Stone, NADFAS Arts Society and Blyth Town Council

National Lottery Heritage Foundation – for the B is for Berwick Programme

Sir James Knott Charitable Trust – creative activities for people living in sheltered housing in Gateshead

Notes to the Financial Statements (continued) for the year ended 31 March 2025**15. Analysis of funds (continued)****Year ended 31 March 2024****Restated**

	At 1 April 2024	Income	Expenditure	Transfers	At 31 March 2024
	£	£	£	£	£
Unrestricted funds					
General fund	42,727	118,647	(182,435)	48,000	26,939
Designated funds					
Redundancy & Wind-up reserve	166,000	0	0	60,000	226,000
Development Fund	125,500	0	0	(60,500)	65,000
Creative Ageing Programme	60,000	0	0	(47,500)	12,500
	351,500	0	0	(48,000)	303,500
Total unrestricted funds	394,227	118,647	(182,435)	0	330,439
Restricted funds					
The Dulverton Charitable Trust	40,000	0	(40,000)	0	0
Newcastle City Council	0	5,000	(5,000)	0	0
National Heritage Lottery Fund	0	56,700	(21,700)	0	35,000
Community Foundation Tyne & Wear and Northumberland Point North	10,960	39,000	(49,960)	0	0
	0	36,835	(36,835)	0	0
National lottery Community Fund	0	10,000	(10,000)	0	0
Innovate UK	0	24,965	(24,965)	0	0
Shears Foundation	0	5,500	(5,500)	0	0
Creative Ageing	0	11,080	(6,080)	0	5,500
Sir James Knott Charitable Trust	0	7,800	(5,500)	0	2,300
Other grants receivable	0	12,205	(9,000)	0	3,205
Total restricted funds	50,960	209,085	(214,540)	0	45,505
Total funds	445,187	327,732	(396,975)	0	375,944

Notes to the Financial Statements (continued) for the year ended 31 March 2025**Original**

	At 1 April 2024	Income	Expenditure	Transfers	At 31 March 2024
	£	£	£	£	£
Unrestricted funds					
General fund	80,718	131,895	(182,435)	48,000	78,178
Designated funds					
Redundancy & Wind-up reserve	166,000	0	0	60,000	226,000
Development Fund	125,500	0	0	(60,500)	65,000
Creative Ageing Programme	60,000	0	0	(47,500)	12,500
	351,500	0	0	(48,000)	303,500
Total unrestricted funds	432,218	0	0	0	381,678
Restricted funds					
The Dulverton Charitable Trust	40,000	0	(40,000)	0	0
Newcastle City Council	0	5,000	(5,000)	0	0
National Heritage Lottery Fund	0	56,700	(21,700)	0	35,000
Community Foundation Tyne & Wear and Northumberland	10,960	39,000	(49,960)	0	0
Point North	0	36,835	(36,835)	0	0
National lottery Community Fund	0	10,000	(10,000)	0	0
Innovate UK	0	24,965	(24,965)	0	0
Shears Foundation	0	5,500	(5,500)	0	0
Creative Ageing	0	11,080	(6,080)	0	5,500
Sir James Knott Charitable Trust	0	7,800	(5,500)	0	2,300
Other grants receivable	0	12,205	(9,000)	0	3,205
Total restricted funds	50,960	209,085	(214,540)	0	45,505
Total funds	483,178	340,980	(396,975)	0	427,183

Notes to the Financial Statements (continued) for the year ended 31 March 2025**16. Pension costs**

Pension contributions payable for the year ended 31 March 2025 were £32,318 (2024 £17,126)

17. Related party disclosures

There were no related party transactions for the year ended 31 March 2025 (2024 none)

18. Reconciliation of net income/(expenditure) to net cash flow from operating activities

	2025	2024
	£	£restated
Net income/(expenditure) for the reporting period	28,759	(69,243)
Adjustments for:		
Depreciation charges	246	263
Interest received	(1,802)	(3,835)
Decrease/(increase) in debtors	11,148	10,694
Increase/(decrease) in creditors	(1,276)	5,932
Net cash provided by (used in) operating activities	37,075	(56,189)